



SPOTLIGHT



ANNUAL REPORT
2023





INSPIRE TRANSFORMATIONAL GIVING TO IMPROVE **HEALTH**, ELEVATE **HOPE**, AND ADVANCE **HEALING** – FOR ALL.



2023

BY THE NUMBERS:

81,281

CONTRIBUTIONS RECEIVED,
TOTALING

\$50 million

15,830

DONORS

\$1.3 million

IN ONLINE
CONTRIBUTIONS RAISED

52

EMAIL CAMPAIGNS SENT WITH
21,341 OPENS

942

SOCIAL MEDIA POSTS

571,075

IMPRESSIONS

11,417

FOLLOWERS

A Message from our Board Chair:



As we celebrate 2023, it's important to reflect on what has been one of our most successful years to date! Thanks to support from our community, thousands of patients who are treated across Atrium Health have hope for a brighter future. Hope brought us all together to make a significant impact on our health system.

Philanthropy has helped enhance our facilities; extend care beyond our walls and directly into communities; pave the way for new research opportunities; and open doors for our future health care work force. Thanks to our generous community, we are stronger, *together*.

With gratitude,

Mandy Houser
Board Chair, Atrium Health Foundation

Dear Friends,



I'd like to underscore the significance of the overwhelming support we received for our Giving Hope campaign this past year — from corporate leaders, foundations, grateful families, and more. Their transformational gifts are supporting patients, care teams, researchers, and even students who aspire for careers in the medical field.

Collectively, these commitments enable us to innovate, excel, and shine! I hope the highlights in this report not only impress you, but inspire you to join our family of philanthropists!

Thank you for giving hope.

Armando Chardiet
President, Atrium Health Foundation

WALMART

Donated to Levine Children's Hospital through the annual Children's Miracle Network Hospitals campaign



HENDRICK FAMILY FOUNDATION

Raised funds for Levine Children's Hospital through the annual Learn Live Hope Golf Classic



CYSTIC FIBROSIS FOUNDATION

Awarded funding to Atrium Health's accredited adult and pediatric Cystic Fibrosis Care Centers



24 FOUNDATION

Donated to cancer survivorship and navigation programs at Levine Cancer and Levine Children's



CHARLOTTE PIPE AND FOUNDRY COMPANY

Donated to Levine Children's Hospital through the annual employee giving campaign



PAULA TAKACS FOUNDATION

Funded sarcoma clinical research and treatment advancements at Levine Cancer and Levine Children's



JEFF GORDON CHILDREN'S FOUNDATION

Supported renovations to the Jeff Gordon Children's Foundation Infusion Suite at Levine Children's



MARTIN TRUOX JR. FOUNDATION

Supported advancements to the Integrative Medicine program at Levine Children's



SWIM ACROSS AMERICA

Funded leukemia research and treatment advancements at Levine Cancer and Levine Children's



EASTWOOD HOMES

Donated to support patient care programs at Levine Children's Hospital



COSTCO WHOLESALE

Donated to Levine Children's Hospital through the annual Children's Miracle Network Hospitals campaign



BOSOM BUDDIES BENEFIT ORGANIZATION, INC.

Donated to breast cancer research and screening programs at Levine Cancer



SPENCER SPIRIT HOLDINGS, INC.

Donated to Levine Children's Hospital's Child Life program from Spirit Halloween's Spirit of Children program



SPEEDWAY CHILDREN'S CHARITIES

Awarded funding to strengthen Atrium Health's anti-trafficking safety net



MULTIPLE MYELOMA RESEARCH CONSORTIUM, LLC

Funded myeloma research and treatment advancements at Levine Cancer



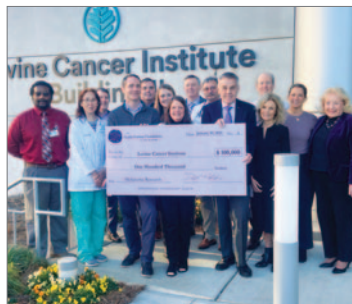
CHICK-FIL-A

Raised funds for Levine Children's Hospital from the annual mobile order campaign



PURPLE PROMISE FOUNDATION TO END MELANOMA

Supported melanoma research and immunotherapy advancements at Levine Cancer



MORRIS-JENKINS COMPANY

Funded renovations to the rooftop playground at Levine Children's Hospital



Partners **GIVING HOPE**



Donors Dazzle at the Levine Children's Gala

The 9th Annual Levine Children's Gala, presented by PNC Bank, welcomed over 500 guests to Uptown Charlotte on April 1, commemorating the 15th anniversary of Atrium Health Levine Children's Hospital. The event was attended by national and local celebrities, athletes, philanthropists, community leaders, corporate sponsors, and Atrium Health leaders. Together, donors helped celebrate the community's extraordinary role in building the hospital's legacy by raising a record \$2.4 million for Levine Children's.

With special thanks to event sponsors:

- PNC Bank
- The David and Nicole Tepper Foundation, Carolina Panthers, and Charlotte FC
- Hendrick Family Foundation
- Truist
- Rodgers Builders
- Brighthouse Financial
- Brasfield & Gorrie
- Hendrick Motors of Charlotte and Mercedes-Benz of Northlake
- Office Environments

Photos by Rebbin Yagci and Andy Majors



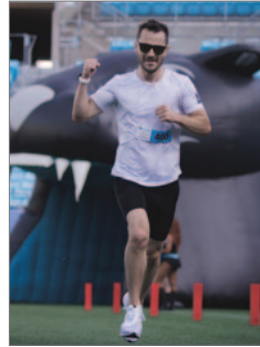
Miracle Makers Radiothon Brings Hope to Pediatric Patients

Hundreds of HITS 96.1 radio listeners celebrated the season of giving by supporting the 2nd Annual Miguel & Holly's Miracle Makers Radiothon in November. Presented by Mark Ficken Ford Lincoln, the two-day event raised money for Atrium Health Levine Children's Hospital. Thanks to a surprise donation of \$300,000 from the Wells Fargo Championship, the radiothon raised over \$345,000 to support pediatric patient programs.

With special thanks to event sponsors and partners:

- Mark Ficken Ford Lincoln
- Wells Fargo Championship
- Famous Toastery
- HITS 96.1 and iHeart Media Charlotte





Keep Pounding 5K Celebrates a Record Turnout

Atrium Health Foundation and the Carolina Panthers hosted the 13th Annual Keep Pounding 5K on June 3. Co-presented by JELD-WEN and Rodgers Builders, the event welcomed nearly 1,500 participants to Bank of America Stadium and raised over \$130,000 for adult and pediatric cancer programs at Atrium Health. Since the establishment of the Keep Pounding Fund in 2004, over \$4.5 million has been donated to advance cancer research and patient support programs.

With special thanks to event sponsors:

- JELD-WEN
- Rodgers Builders
- Genentech
- APM Terminals
- AstraZeneca
- DeMayo Law Offices
- Vesuvius
- Queen City News
- Boingo Graphics

Photos by Aguinaldo Studios

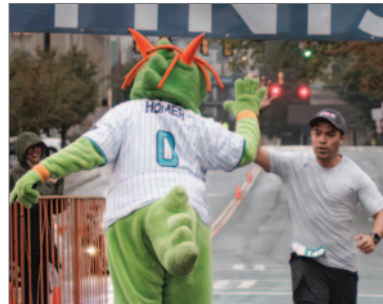
All Steps Lead to Hope at the Hopebuilders 5K

Rain didn't stop hundreds of community members from participating in the 28th Annual Hopebuilders 5K on October 14. The fundraiser for Atrium Health Levine Children's Hospital was hosted in partnership with the Charlotte Knights and held at Truist Field in Uptown Charlotte. Thanks to the tremendous support of corporate sponsors, participants, and donors, the Hopebuilders 5K has raised over \$3 million since its inception, nearly three decades ago.

With special thanks to event sponsors:

- Barings
- DeMayo Law Offices
- Office Environments
- Samet Corporation
- HITS 96.1
- WCNC

Photos by Aguinaldo Studios



DRIVING HEALTH CARE FORWARD

Atrium Health continues to bring health to every corner of the diverse communities it serves through state-of-the-art mobile medicine units. The innovative care model is designed to meet patients where they are, targeting areas where residents experience economic and social challenges to receiving traditional methods of care.

By partnering with nonprofits, churches, and other community organizations, Atrium Health providers can better understand the specific care needs within each population and deliver culturally competent care in a trusted setting.

Bringing Primary Care and Women’s Care to Communities in Need

Launched in 2022, Atrium Health Mobile Medicine provides comprehensive primary care and women’s care services to residents across nine North Carolina counties. Today, the program includes three “Care Everywhere” primary care units, which treat minor injuries to long-term diseases, and one “Drive to Thrive” women’s care unit that provides access to birth control, prenatal and postpartum care, ultrasounds, mammogram referrals, cervical cancer screenings, and more.



Atrium Health Mobile Medicine is made possible by transformational support from Truist (via the Truist Charitable Fund); The Tepper Foundation, with local operational support from The David and Nicole Tepper Foundation; Barbara and Todd Kopczynski, MD; and the C.D. Spangler Foundation, among other benefactors.

Providing Cancer Screenings for High-Risk Patients

Atrium Health Levine Cancer Disparities & Outreach provides cancer screenings in at-risk communities across the Carolinas — from lung cancer screenings in mobile lung buses equipped with CT scanners, to breast cancer screenings conducted in partnership with Charlotte Radiology. Patients also have access to additional screenings for colorectal, skin, and prostate cancer.



1. Established by The Leon Levine Foundation and Bristol-Myers Squibb Foundation, the Lung B.A.S.E.S. 4 Life program provides lung CT screenings across the region.
2. In partnership with Charlotte Radiology, the Project PINK and Project Pink PLUS programs provide mammogram screenings and breast cancer follow-up care.



2023 BY THE NUMBERS

8 
MOBILE MEDICINE UNITS

26 
COUNTIES SERVED

4,567 
PATIENTS SERVED

39 
CANCERS DIAGNOSED

IMPROVING ACCESS TO HEALTH CARE IN RURAL COMMUNITIES

Expanding School-Based Virtual Care

In 2023, Atrium Health's School-Based Virtual Care program completed over 10,000 medical exams for children across the region. The program, which was established in 2017, embeds virtual clinics in local public schools to provide on-site primary care for students. Using video technology, an Atrium Health pediatrician can diagnose and treat minor conditions, and a child's parent or guardian can join the appointment in real time, reducing disruption to families' busy lives.



A gift from LendingTree CEO Doug Lebda and his family has created the Lebda Family Rural Healthcare Program to expand school-based virtual care in rural Rutherford County. With over 7,000 students in 19

schools in Rutherford County, the program has the potential to complete over 1,300 virtual visits each school year, helping students to stay in school and achieve academic success.



Atrium Health is leveraging its successful virtual care model to provide mental health services in rural schools. A \$670,000 grant from The Duke Endowment will expand school-based virtual therapy to elementary students in Cleveland, Rutherford, Stanly, and Anson counties. Funding will help ensure students have timely and convenient access to virtual psychiatric care and provide a community health worker to connect families to vital resources such as housing, food, and transportation.

1. Eight-year-old Piper, a student at Forest City-Dunbar Elementary School, demonstrated a virtual care visit. 2. Giving Hope campaign cabinet member and benefactor Doug Lebda joined students and school leaders for a special gift announcement.

Improving Access to Dental Care

A \$530,000 grant from The Duke Endowment will improve access to dental care in Anson County by supporting Atrium Health's creation of an integrated oral health care program. The program will connect patients presenting with oral pain in the Emergency Department to local dental and community health resources. A specialized care team comprised of community health workers and referral navigators will provide patients with holistic, wraparound support.



Providing Behavioral Health Care to Mothers

A \$460,000 grant from The Duke Endowment is supporting the behavioral health care needs of pregnant and postpartum women living in Cleveland, Rutherford, Lincoln, and Gaston counties. Funding has enabled Atrium Health to recruit four licensed clinical social workers, who provide treatment within Atrium Health Shelby OB/GYN clinics. By offering social support and counseling services to maternity patients and patients receiving gynecological care, Atrium Health aims to improve maternal and infant health outcomes. The program is meeting a critical need for behavioral health care in the area and has the potential to impact over 5,000 patients annually.

Atrium Health is one of the largest rural care providers in the Southeast.

770,000
RURAL NC PATIENTS
TREATED ANNUALLY

57
RURAL COUNTIES SERVED

5
STATES SERVED

Healthy COMMUNITIES

FUELING DISCOVERY AND INNOVATION

For health systems across the country, endowed chairs are considered the gold standard of faculty distinction and recognition. These prestigious positions help to recruit and retain the brightest experts by establishing a permanent source of funding for health care professionals and their programs. Atrium Health is fortunate to have generous donors who support extraordinary clinicians through endowed chairs, driving advancements in education and care delivery.

Advancing Cardiovascular and Cancer Care

A gift made by **Bissell Ballantyne, Margaret and Smoky Bissell, and Annette Siverling** is advancing education and cardiovascular performance programs at Atrium Health Sanger Heart & Vascular Institute through the Gragg Endowed Chair in Cardiovascular Medicine and the Gragg Center for Cardiovascular Performance. Dr. Dermot Phelan is the first recipient of the Gragg Endowed Chair in Cardiovascular Medicine. He serves as Sanger Heart & Vascular Institute’s medical director of cardiovascular imaging, director of sports cardiology, and co-director of the Hypertrophic Cardiomyopathy Center.



Dr. Dermot Phelan, Gragg Endowed Chair, and his wife, Brenda, with their children James, Luke, Amelia, and Lincoln.



Giving Hope Honorary Chair Jim Hynes (right) with his longtime friend, Smoky Bissell.

An additional gift from the **Bissell family** has established the Jim Hynes Endowed Chair in Prostate Cancer and the Jim Hynes Prostate Cancer Center of Excellence at Atrium Health Levine Cancer Institute. The contribution honors the Bissells’ longtime friend, James E.S. “Jim” Hynes, whose service to Atrium Health spans 50+ years, starting with his role on the original advisory board of what was previously Charlotte Memorial Hospital.

Growing a World-Class Congenital Heart Care Program

Kara and Greg Olsen’s transformational giving helped establish the HEARTest Yard Congenital Heart Center at Atrium Health Levine Children’s in late 2020. Now, the most recent **gift of \$2.5 million from Receptions for Research: The Greg Olsen Foundation** will support the continued development of the specialty center and establish a distinguished chair that enables Levine Children’s to continue building a world-class congenital heart program for years to come.



Atrium Health Levine Children’s patient families and teammates joined Kara and Greg Olsen to celebrate a \$2.5 million gift to the HEARTest Yard Congenital Heart Center.

THE GOLD STANDARD OF CARE

25

ENDOWED AND DISTINGUISHED CHAIRS
ESTABLISHED AT ATRIUM HEALTH

7

MEDICAL SERVICES
IMPACTED BY FUNDING

PERFECTING PERSONALIZED CARE

At Atrium Health Perspective Health & Wellness, patients have access to an enhanced level of personalized care, including streamlined primary care services with on-site radiology and laboratory facilities, renowned medical expertise, and world-class specialists. Led by Dr. Lorri Ayers, specialty medical director of Executive Health and Concierge Medicine at Atrium Health, the program has received a generous boost from philanthropy. Through a **generous gift from Jane and John Cato**, nursing and allied health teammates within Perspective Health & Wellness will have greater access to educational, scholarship, and professional development opportunities.



ESTABLISHING A PSYCHIATRY FELLOWSHIP

Leon Levine's legacy of supporting behavioral health care for children and adolescents lives on through a transformational gift to Atrium Health Levine Children's. A **\$3 million gift from The Leon Levine Foundation** will help to address a critical regional shortage of child and adolescent psychiatrists by launching the Sandra and Leon Levine Child and Adolescent Psychiatry Fellowship.



In collaboration with Atrium Health Carolinas Medical Center, the program will be offered annually to three fellows per class, helping to fill a critical shortage in providers serving children and teens throughout the Charlotte area.

The two-year fellowship will enrich graduate medical education programs that have positioned Atrium Health as the preeminent learning health system in the Charlotte area, including Wake Forest School of Medicine Charlotte, where medical students are anticipated to begin their education in 2025.

BOLSTERING WORKFORCE DEVELOPMENT PROGRAMS

Atrium Health is committed to improving access to employment and increasing economic mobility through its comprehensive Workforce Development programs. Launched as a pilot in 2021, Atrium Health's Restorative Pathways program trains, develops, and hires justice-involved individuals into in-demand health care roles by providing business and professional core-competency training and mentorship opportunities.

A **\$250,000 grant from the City of Charlotte** will significantly increase the number of participants Atrium Health can enroll in the program through a successful, continued partnership with City StartUp Labs. Funding will support the recruitment, interview, and candidate selection processes, as well as re-entry procedures for Restorative Pathways participants.



Harrison Ervin enrolled in Atrium Health's Restorative Pathways program in 2023 and currently works as a patient safety attendant at Atrium Health University.

BUILDING A BRIGHTER FUTURE FOR HEALTHY MINDS

A **\$1 million contribution from the Sherrill family and SteelFab, Inc.** will support state-of-the-art interventional and neurocognitive programs at Atrium Health Behavioral Health and Atrium Health Neurosciences Institute, including funding for Alzheimer's disease research.



Under the direction of Dr. Oleg Tcheremissine, professor of psychiatry and research director for Behavioral Health Services at Atrium Health, recent Alzheimer's studies have demonstrated significant reduction in cognitive decline. Further research will focus on understanding the underlying biological complexity of Alzheimer's disease to develop novel therapies. The funds will also help address the entire spectrum of cognitive symptoms and affective disorders associated with Alzheimer's disease.

DEVELOPING PROMISING THERAPIES FOR PEDIATRIC CANCERS

Atrium Health board member and philanthropist Beverly Ladley and her husband, Mark, continue to reach for the stars and bring hope to patients battling pediatric brain tumors. Through their leadership as Dreamcatcher Society members and founders of the Baby J Ladley Pediatric Brain Tumor Fund, **the Ladleys have been instrumental in raising significant funds** to benefit Atrium Health Levine Children's Pediatric Neuro-Oncology program within the Torrey Hemby Center for Cancer & Blood Disorders.

In recent years, gifts to the Baby J Ladley Pediatric Brain Tumor Fund have supported the opening of Levine Children's Pediatric Oncology Laboratory and acquisition of state-of-the-art equipment, including a mass cytometry machine that measures how different types of cells within a tumor are responding to treatment. Levine Children's is one of only a few dozen hospitals in the country with this instrument.



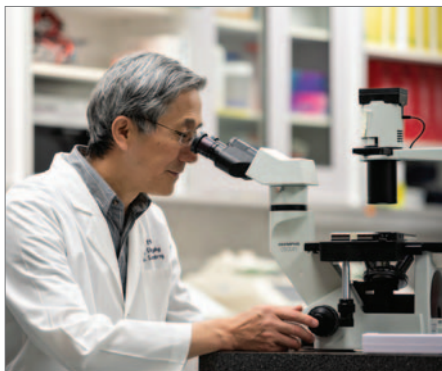
Beverly Ladley gave a show-stopping performance at the Charlotte Ballet's Dancing with the Stars of Charlotte Gala, raising funds for the Ballet and pediatric cancer research at Atrium Health.



California jeweler Lauren Harwell Godfrey (pictured fourth from left) teamed up with the Ladleys for the annual Baby J ornament sale benefiting Atrium Health Levine Children's.



ADVANCING MUSCULAR DYSTROPHY RESEARCH



Directed by Dr. Qi Long Lu, the McColl-Lockwood Lab is a division of the Carolinas Neuromuscular/ALS MDA Center, part of Atrium Health Musculoskeletal Institute and Atrium Health Neurosciences Institute.

Since opening its doors nearly 20 years ago, the McColl-Lockwood Laboratory for Muscular Dystrophy Research has received over \$23 million in funding to develop novel therapies for muscular dystrophy, specifically limb-girdle muscular dystrophy (LGMD) and Duchenne muscular dystrophy (DMD). **Continued philanthropic investments from the McColl and Lockwood families, Muscular Dystrophy Association, and donors to the Carolinas Muscular Dystrophy Fund** — coupled with scientific innovation from Biotech companies and startups like ML BioSolutions and AskBio — are driving milestone achievements in experimental therapies.

With state-of-the-art equipment, the research team focuses on cell biology, molecular biology, drug development, and drug testing — both in vitro and in vivo. Currently, two therapeutic approaches are under development for clinical trials to LGMD2i, one of the most common forms of limb-girdle muscular dystrophy.

SUPPORTING BLOOD CANCER CLINICAL RESEARCH

A **generous gift from Kathryn and Luke Kissam** has established the Kathryn & Luke Kissam Blood Cancer Research Fund at Atrium Health Levine Cancer Institute. The contribution will advance translational and clinical research to develop novel therapies for blood cancers and improve patient outcomes.



Through their leadership and generosity, Kathryn and Luke Kissam continue to provide hope to patients at Atrium Health.

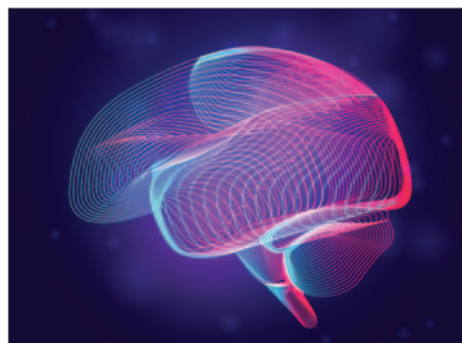


Since opening in 2012, Levine Cancer Institute has remained a national leader in blood cancer and blood disorder care. Its team of experts offers patients the latest treatments available, including the first bone marrow transplant unit of its kind in the region and CAR T-cell therapy as an approved treatment for certain blood cancers. When standard treatments have failed, patients have access to an extensive program of clinical trials for cancer and blood disorders, including Phase I studies. There are currently 50 active hematology studies at Levine Cancer Institute.

SUPPORTING THE VISION FOR COMPREHENSIVE BRAIN HEALTH

A **generous gift from Art Fields** has established the Atrium Health Neuroscience Advancement Fund at Atrium Health Foundation. Under the leadership of Dr. Anthony Asher, president of Atrium Health Neurosciences Institute, the fund will support the bold vision of Atrium Health and Advocate Health to be leaders in comprehensive brain health.

Building upon the preeminent research and education offered at Atrium Health Wake Forest and the clinical expertise of Atrium Health Neurosciences Institute, Atrium Health aims to create a center for brain-related clinical research, societal outreach and impact, and health care artificial intelligence.



INTRODUCING NOVEL CANCER THERAPIES TO THE CAROLINAS

In June 2023, Atrium Health Foundation announced a **\$7.5 million gift made by Sandra and Leon Levine**, through The Leon Levine Foundation, to advance cancer research and bring the latest innovations in precision medicine to the Carolinas.

In addition to funding research and education for all of Atrium Health’s cancer programs, the gift will support the new Atrium Health Levine Cancer Proton & Advanced Radiation Center, which will house Levine Cancer Institute’s most technically advanced services, including gamma knife radiosurgery and the Carolinas’ first proton beam therapy.

Proton beam therapy targets radiation precisely to a tumor, leaving the areas around it unharmed. It has been used clinically for more than 60 years and has been proven to be safe, effective, and to improve the quality of life for patients.

Through the Levine family’s commitment, Atrium Health will now be one of only 44 sites in the country to offer proton beam therapy — both to adult patients at Atrium Health Levine Cancer and pediatric patients at Atrium Health Levine Children’s — ensuring individuals and families will be able to receive this advanced therapy close to home.



The delivery of the state-of-the-art cyclotron accelerator in December 2023 marked one of the final steps in the completion of the Atrium Health Levine Cancer Proton & Advanced Radiation Center. Sandra Levine, along with family members and representatives from The Leon Levine Foundation, celebrated the groundbreaking milestone by signing the crucial piece of equipment for proton beam therapy.

A closer look: **ATRIUM HEALTH LEVINE CANCER PROTON & ADVANCED RADIATION CENTER**

<p>34</p> <p>STAFF DEDICATED TO RADIATION THERAPIES</p>	<p>1 of 44</p> <p>SITES IN THE COUNTRY TO OFFER PROTON BEAM THERAPY, AND THE ONLY SITE BETWEEN WASHINGTON DC AND ATLANTA</p>	<p>850</p> <p>PATIENTS PROJECTED TO BE SERVED IN 2024</p>
--	---	--

TRANSFORMING CARDIOVASCULAR CARE

As a nationally recognized leader in cardiovascular care, Atrium Health Sanger Heart & Vascular Institute is making significant breakthroughs with support from philanthropy. Whether supporting prevention and early detection initiatives, cutting-edge research and treatment advancements, or expert cardiac rehabilitation, donors continue to transform care for individuals and families throughout the region:



Seated: Dr. Esther Kim, Izard Family Distinguished Chair in Cardiovascular Medicine; second row (from left): Dr. Geoffrey Rose, president of Atrium Health Sanger Heart & Vascular Institute, and benefactors Kathy and Charlie Izard.

A gift from **The William, Jeff & Jennifer Gross Family Foundation** will establish a Center for Advanced Cardiovascular Analytics, an innovative program housed within The Jenny & Jeff Gross Family Center for Cardiovascular Care Transformation. Under the leadership of Dr. Bill Downey, the program will position Sanger Heart & Vascular Institute to shape the landscape of cardiovascular care in the Southeast by integrating the latest technology of artificial intelligence into the health care experience.

A gift from **Kathy and Charlie Izard** will provide ongoing programmatic support for Sanger Heart & Vascular Institute's Center for Women's Cardiovascular Health, which is led by Dr. Esther Kim. Funding will advance the treatment of women with the full range of heart and vascular disease concerns, including heart attacks and aneurysms, as well as patients at elevated risk for heart disease due to family history or risk factors affected by lifestyle.

A gift from **Felix Sabates, Jr.**, Atrium Health Foundation board member emeritus and Giving Hope cabinet member, will advance Atrium Health's comprehensive, world-class cardiovascular program. The donation marks Felix's second transformational gift to the Giving Hope campaign.

CREATING SPACES THAT NURTURE AND HEAL

Naming of Atrium Health Union West Chapel

Community members came together to celebrate the naming of the Dennis W. Moser Family Chapel at Atrium Health Union West. A longtime resident of Union County, Dennis Moser was inspired to make a meaningful gift to support the hospital. His family's generosity will provide patients and families with a tranquil space for meditation, reflection, and prayer.



Benefactors Patti and Dennis Moser attended the chapel dedication with Atrium Health leaders.



Bringing Nature to Cancer Patients

Atrium Health Levine Cancer Institute's rooftop Healing Garden is undergoing renovations thanks to a generous gift from benefactor Eva Stark. An avid gardener herself, Eva is committed to providing patients and their families with a space for respite and reflection. Inspired by her late grandmother's experience with breast cancer, Eva has previously funded clinical research, detection efforts, and treatment advancements at Levine Cancer Institute.

Benefactor Eva Stark toured the garden with her son, Marcel.

Helping Infants Thrive

Atrium Health Foundation has received a generous bequest from David Almason to support Atrium Health Levine Children's Hospital's neonatal intensive care unit. This funding will enable a vital upgrade to the hospital's bottle-feeding preparation room, expanding its footprint and equipping it with new, user-friendly features to enhance the efficiency and effectiveness of the care team.



2023 SUMMARY

IN THOUSANDS

Assets	
Receivables	\$ 95,728
Cash & Securities Investments	402,358
Other	9,943
Total Assets	\$508,029
Liabilities & Net Assets	
Grants & Accounts Payable	\$ 3,932
Other Liabilities	903
Revocable Funds Managed for Others	2,256
Net Assets	500,938
Total Liabilities & Net Assets	\$508,029
Revenues	
Net Contributions	\$ 56,222
Net Investment Losses	45,451
Total Revenues	\$ 101,673
Grants & Expenses	
Grants	\$ 56,097
General Administrative	1,948
Fundraising	5,268
Depreciation	246
Total Grants & Expenses	\$ 63,559
Net Assets	
Change in Net Assets	\$ 38,114
Net Assets Beginning of Year	\$ 462,824
Net Assets End of Year	\$500,938

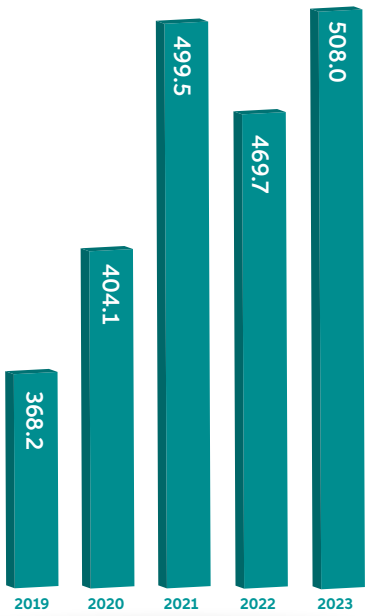


Annual

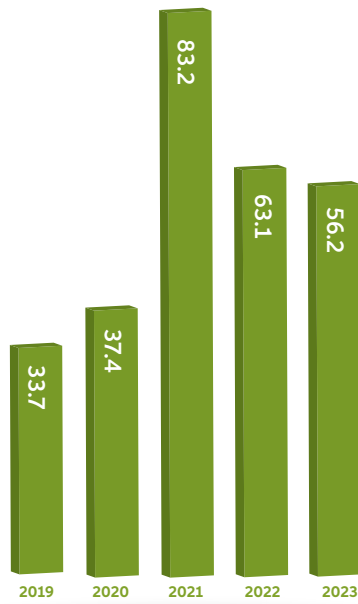
FINANCIAL HIGHLIGHTS



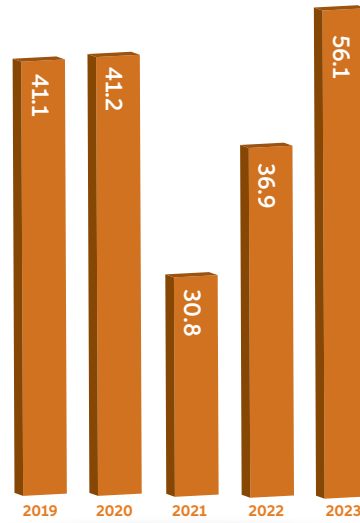
TOTAL ASSETS (MILLIONS)



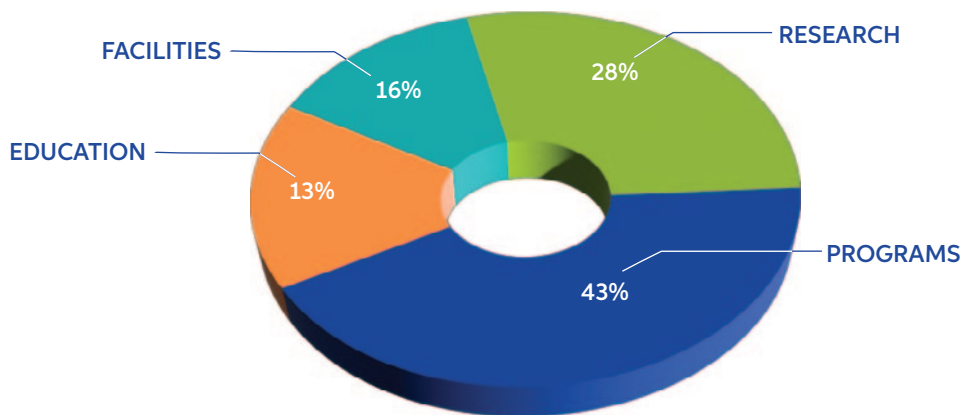
NET CONTRIBUTIONS RECORDED (MILLIONS)



GRANT EXPENDITURES (MILLIONS)



FUND ALLOCATION



STAFF

President's Office

Armando L. Chardiet
President

June Laubinger
*Executive Assistant
to Armando Chardiet*

Senior Leadership

Electa E. McPherson, MBA
*Senior Vice President, Operations
& Chief Financial Officer*

Kirstin Ashford
Vice President, Chief of Staff

Mark L. Griffith, CFRE
Vice President, Development

Kathy Curtis
*Executive Assistant
to Electa McPherson*

Development

Ryan Marshall, MBA
*Assistant Vice President,
Development*

Kellie McGregor
*Assistant Vice President,
Development*

Beth Braxton
Director, Development

Holli Helms, MHA
Director, Development

Page Ramsay Stroup, MS
Director, Development

Elizabeth Rodriguez
Director, Development

Helen Kernodle
Senior Development Officer

Taylor Sherman
Senior Development Officer

Kelsey Wilson
Senior Development Officer

Development

Erin Oliveira
Development Officer

Jená Lott
Senior Administrative Assistant

Corporate & Foundation Relations/Grants

Rachel Ellis
*Assistant Vice President, Corporate
& Foundation Relations/Grants*

Ginger Moran
*Director, Foundation
Relations & Grants*

Alicia Morris Rudd
Director, Corporate Relations

Sarah Bailey
*Senior Strategist, Foundation
Relations & Grants*

Strategic Relations & Communications

Kathleen LeFever
*Assistant Vice President, Strategic
Relations & Communications*

Abby O'Connor
*Director, Donor Relations
& Stewardship*

Kayla Baker
*Senior Strategist,
Foundation Events*

Katelyn Dubois
*Senior Strategist, Strategic
Relations & Communications*

Erin Hampson
*Senior Strategist, Donor Relations
& Stewardship*

Madeline Yih
*Senior Strategist,
Foundation Events*

Strategic Relations & Communications

Anita McClary
*Manager, Donor Relations
& Stewardship*

Sheri Joseph
*Strategist, Strategic Relations
& Communications*

Liv Paxton
Strategist, Foundation Events

Eleni Logan
Senior Administrative Assistant

Data Analytics & Development Operations

Julian Ryan Heidelberg, MBA
*Assistant Vice President,
Development Operations*

Cindy Grier
Senior Applications Specialist

Carolina Bellido
*Project Manager, Data
& Gifts Management*

Elizabeth Haggart
*Project Manager,
Prospect Development*

Finance

Katherine Schmitt
*Assistant Vice President,
Financial Services*

Maranda Hamilton
Manager, Financial Services

Devin Hutchison
Accountant II

Shanice Marte
Project Manager, Grants

ATRIUM HEALTH FOUNDATION BOARD OF DIRECTORS

Mandy Houser, *Chair*
Luther Lockwood, *Vice Chair*
David Secrest, *Secretary*
Howard Bissell
Todd Collins
Beau Cummins
Bevie Hemby
Greg Johnson
Beverly Ladley

Doug Lebda
Grace Nystrum
Greg Olsen
Manuel Rey
Mike Rucker
Mike Salvino
David Sheffer
Nicole Tepper

Directors Emeritus

Bishop George Battle
Jim Hynes
Felix Sabates
Lori Sklut
Vicki Sutton



**Atrium Health
Foundation**